

Term 1-Week 2-2025

Te Anau School Newsletter

Te Kura o Te Anau



Term 1 - Week 2 - 2025

Principal's Pen

Kia ora Whānau,

Some of you may have noticed that near our scooter pad area, there is some building currently going on.

Towards the end of last year, we worked with local organisations to fund some bikes and a bike shed. This is to allow all our tamariki access to bikes at school and to also support our bike trips that we have here at school.

This has all been led by a tour company called Ride Holidays. Ride Holidays offer bike tours all over the world but also have charity rides here in New Zealand which includes riding along the Milford Road. The proceeds from this year's charity ride will fund bikes at our school and Fernworth School in Invercargill.

There has also been support from local businesses in the project. Locals, Kate and Steve Norris from Trips and Tramps, as well as RealNZ, have put funding towards the bikes. The 30 bikes will consist of ten at 16-inch, ten at 20-inch and ten at 24-inch. This will mean most of our children will be able to access a bike at school.

Along with the bikes though, we needed a shed to store these. This is what you can currently see being built. The shed is a 4m x 6m pole shed with roller doors at each end, and is being funded by a range of organisations and businesses. We have funding from Meridian Energy's Power Up Fund, Trips and Tramps have helped again, a bequest in a will was made from long-time local Jan Vermeulen along with our board putting up funds. This is all being helped along with help from Singh Contracting to get it put together.

On top of that, the local Flower Show Committee has given us funds to fit the shed out with bike racks and equipment. This really is a community project, thank you to all of those that are involved.

The shed is going up over the next few weeks, and the bikes will arrive soon. There will be an official opening on March 29 when the charity riders finish their ride.

Ngā mihi nui,

Grant Excell

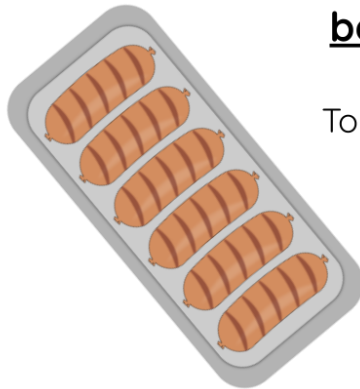
Principal

School News

Friday Sausages This Week! Only \$2.00

Please bring your \$2 coin to the
Cayford Block kitchen

**Please note this must be
before 9am**



To avoid long queues, please give
exact money.

Please support our Year 6
Dunedin camp fundraiser!

Reminder: Scholastic Book Orders Are Due Tomorrow, Friday 14 February

School Policies and Procedures

Our policies and procedures can be viewed at any time through our school website at www.teanau.school.nz. Click on 'Policies and Procedures' and enter the following username and password. Username: teanau Password: climbing

This term we are reviewing:

- **Health, Safety, and Welfare Policy**
- **Safety Management System**
- **Risk Management**
- **Healthcare**

Click on **Current Review** to view and give feedback.



***SMASH PLAY CRICKET
TERM 1 2025
MONDAYS - TE ANAU***

YR1/2 BOYS & GIRLS

STARTING MON 3RD MAR FOR 5 WEEKS

***4PM START EVERY WEEK
@ TE ANAU CRICKET CLUB, DUSKY ST***

\$25 COST PER PLAYER

REGISTRATIONS NOW OPEN!

**SUMMER
SMASH**



***SUMMER SMASH CRICKET
TERM 1 2025
MONDAYS – TE ANAU***

YR3-6 BOYS & GIRLS

STARTING MON 3RD MAR FOR 5 WEEKS

***4PM START EVERY WEEK
@ TE ANAU CRICKET CLUB, DUSKY ST***

\$25 COST PER PLAYER

REGISTRATIONS NOW OPEN!



Having Hero App Problems?

Are you having Hero App problems?

- Sign in again. Please note that if the app isn't used for a long period of time, it can log off if not used.
- Try using another device or remove the app off and reload using the steps below.
- Check the email address you have given is correct.

Please follow the following steps to sign up to Hero:

1. Go to the App Store or Play Store and download the Hero app or go to our.linc-ed.com
2. Select "New User". Your account will be set up by your school using the email address that you provided when you enrolled your children, use this address to request a password.
3. Add your email address - Select the "Request Password Link."
4. Check your email - Hero will send you an email with a link to follow.
5. Follow the link - This will take you to a secure page to enter your chosen password.
6. Once this is done you should come to a page with basic information on your child.

School Term Calendar 2024

You can also access our school calendar through the website www.teanau.school.nz¹

Click on 'Our School' on the taskbar, then click on 'Calendar'

¹<https://www.teanau.school.nz/>

- 17-20 February - Year 4 & 5 Float Days
- 19 February - Board Meeting - 7pm
- 21- 28 February - Life Education Bus
- 21 February - Whole School Assembly 9.30am Event Centre
- 3 March - Cricket Southland Visit
- 7 March Basin Athletics
- 13 March - Northern Athletics
- 14 March- Northern Athletics Postponement Day
- 19 March- Basin Swimming Sports
- 22 March- Southland Athletics
- 4 April - Whole School Assembly 9.30am Event Centre
- 7 April - Year 6 GRIP Leadership Conference
- 11 April - Last day of Term 1
- 28 April - Term 2 Starts
- 16 May - Basin Cross Country
- 24-28 November - Year 6 Camp Week

Community News



Chat with other parents and carers who know what it's like to care for a disabled child, a neurodivergent child, or a child with health impairments.

Parent to Parent will be hosting Parent Support Groups in Te Anau every 3 months, to support carers and parents just like you. These groups are a safe space for family and whānau to share their experiences, their challenges, their triumphs, and to learn from each other in an open and 100% judgement-free environment. No topic is too 'weird', no question too 'out there'. We get it, and we are here to help.

So if you'd like to share a struggle, celebrate a success, raise a concern, or simply chat with other parents and carers in your area, you are always welcome at our Parent Support Group. Children are welcome too! Drop in for as long or as short a time as you want.

Upcoming groups for 2025

Dates: Tue 25th February | Tue 27th May | Tue 26th August | Tue 25th November
Time: 1:30pm – 2:30pm
Venue: Fiordland Community House, 21 Luxmore Drive, Te Anau 9600

Feel free to just show up on the day!

Or contact MaryAnn Hughes for more information:
maryann@parent2parent.org.nz | 027 808 3951

MOSSBURN CLINIC - ON TRACK LEARNING

I am seeking expressions of interest to run a Wednesday(?) weekly face to face tuition service in Mossburn, for the Northern Southland/

Te Anau areas to support students in Reading, Maths and English (Y1-Y10), and Maths and Sciences at NCEA/Senior Levels. Please go online to www.ontracklearning.co.nz to investigate and make an initial enquiry. Nga mihi. Patria Kerr Director – On Track Learning, Invercargill.



FIORDLAND COMMUNITY GARDEN

Summer Garden Harvest Cooking Class

Thursday 20th February | 6.30 - 8.30pm | Fiordland Community Garden/Event Centre Kitchen

Join Chef Katherine Mitchell at the community garden to gather fresh ingredients for a cooking class to herald the summer harvest

Book your space now, these classes are very popular:
www.trybooking.com/nz/VRI
or:
fiordlandcommgarden@gmail.com

\$10

The poster features a vibrant background of a garden with various flowers and vegetables. In the foreground, there is a white tray with fresh produce including a yellow squash, a red tomato, and green herbs. A glass vase with flowers sits on a white lace tablecloth. A blue circular logo for 'FIORDLAND COMMUNITY GARDEN' is in the top left corner. A blue circular badge with '\$10' is in the bottom left corner. A white speech bubble containing booking information is in the bottom right corner.

Work-Life Balance - The Myths and Realities webinar!

Thursday 6th March
7:30 pm - 9:00 pm



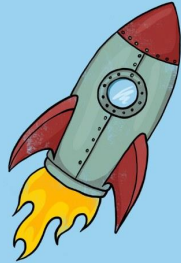
Bookings essential
<https://events.humanitix.com/work-life-balance>

real parents

The webinar poster has a dark blue background. On the left, there is an illustration of two hands, one holding a yellow ball and the other holding a red ball, with several other colorful balls (blue, orange, red) floating around. On the right, there is a portrait of a woman with long brown hair, wearing glasses and a blue floral top. At the bottom, there is a white speech bubble with booking information and the 'real parents' logo.

Children's Wellbeing and Resilience webinar!

Tuesday 18th February
7:30 pm - 9:00 pm



Bookings essential
<https://events.humanitix.com/child-wellbeing-and-resilience-with-anna>

real parents



CASTING CALL

We're looking to cast two families from **Wanaka / Queenstown / Dunedin / Invercargill & surrounds** to take part in some video & stills content for a collaboration between Tourism NZ and a popular online game. Specifically:

- 1 x Pākeha/European Father (aged late 30s - early 40s)
- 1 x Pākeha/European Child (aged 5 - 10)
- 1 x Chinese Father (aged late 30s - early 40s) |
- 1 x Chinese Child (aged 5 - 10)

**** PAID OPPORTUNITY ****

Shooting in Milford Sound on 25th February 2025

If you are interested in applying, please email harriett@goodeggcasting.com with a recent photo of you and your child by Wednesday 13th February. I'll reply with more information about the project & what's required.
Thank you!



Navigating the system



Do you have a disabled child, a neurodivergent child, or a child with a health impairment? Learn more about what supports are available and how to access them.

Learning about the various disability support services can be overwhelming for many parents and caregivers. This workshop explores what supports are available in your region, and gives participants the opportunity to hear from professionals who work in the sector. Learn more about:

- Topic 1: Individualised Funding and how it increases your choice and control of who provides support and how and when you use it
- Topic 2: Preparing for a Needs Assessment and reviews/reassessments

Sue Gibson, Whaiātea from Access Community Health and **MaryAnn Hughes**, Regional Coordinator – Southland and Otago from Parent to Parent are facilitating this event.

Thursday 20th March, 2025

Time: 10:00am – 2:00pm | Southland Community House, Community House 46 Kelvin Street, Invercargill 9810 | Lunch provided

Cost: This workshop is free thanks to funding from Care Matters*

** Your family must be eligible for disability support services to attend this workshop. Please contact us if you are unsure of your eligibility.*

[Click here to register now.](#)

Or contact MaryAnn Hughes for more information:
maryann@parent2parent.org.nz | 027 808 3951

In partnership with:

CARE MATTERS
LEARNING & WELLBEING



SOUTHLAND A&P SHOW

Saturday 1st March
Donovan Park



SCARECROW Creations

Sections include: 0-4 Years, 5-11 Years and 12-17 Years. Check out our schedule of classes online to see further details!



HOME Industries

Be sure to check out the schedule of classes, there is literally something for everyone to be involved in!




COLOURING Competition

Our colouring competitions are on our website for children to complete if they wish.



For more information check out our website
www.southlandapshow.co.nz

 Find us on Facebook

admin@southlandapshow.co.nz