

# Term 1-Week 10-2025

*Te Kura o Te Anau*



## Principal's Pen

---

*Kia ora Whānau,*

*Tomorrow, I say goodbye.*

*For the past 16 years, I have come to work at Te Anau School. When I came as a regular teacher back in 2009, I knew that this place was a great place for kids to be. Since then, I have had my own children and have seen them come through Te Anau School. I have been fortunate in many ways.*

*For the past nine and a half years, I have had the pleasure of being the principal here. I have been incredibly lucky to be able to be the principal in the town where I really wanted to live.*

*I feel now is a good time for me to move on. I have ticked off many milestones and goals. I have seen the roll grow from 220 when I took over to the end-of-year roll of 325 in 2024. I have seen our outdoor education program go from strength to strength and enjoyed building connections within the community, such as our partnership with Fiordland Lobster Company. I feel our connection with our local Runaka, Ōraka Aparima, has never been better. I have been through a classroom build and have been able to get our current hall project over the line in terms of funding and design. Now, it just has to be built! I am proud of the development and changes that the school has been through while I have been principal.*

*Thank you to everyone who has helped along the way. This community wraps around Te Anau School, and the children of Te Anau are lucky to have the support that they get. Whether it be the Board, the PTA, businesses, community groups or parent helpers around the school. The kids in Te Anau get a pretty good deal.*

*I want to say a massive thank you to all of the staff here at Te Anau School. You have been a pleasure to work with and really do make this school tick. I know this commitment will continue for many years to come.*

*Of course, I also want to thank all of the amazing children who have attended Te Anau School while I have been here. You are what this school is all about. Once I'm gone, I will miss all the hellos and stories that I get to hear each day.*

*From me, thank you to everyone who has been involved in Te Anau School while I have been here!*

*Ngā mihi nui,*

*Grant Excell*

*Principal*

---

# School News

## Special Assembly Tomorrow!



### Junior Athletics Day!!

Thank you to all who came out and supported our Junior tamariki as they competed in their athletics events yesterday. Even though the weather was a little unsettled, a great day was had by all.

**Our Junior Athletics champions (top point scorers for each year level) for 2025 are:**

**Year One Girls**

Maggie Russell

**Year One Boys**

Jonny Crouchley

Bobby Fry

Jax Te Rupe

**Year Two Girls**

Arabella Kinsey

Charlotte Ladbrook-Harris

**Year Two Boys**

Hudson Davies

**Year Three Girls**

Daniella Chartres

**Year Three Boys**

Harvey Thomson



**Well done and congratulations to you all!**

### Southland Swimming Championship Results

**Congratulations** to everyone who competed at the Southland Swimming Championships in Invercargill recently. Here are the top 10 results in each category:

**Girls 5-8 25 SC Metre Backstroke**

1st Willa MacPherson-Martin

5th Gracie McIntosh

**Girls 9-10 25 SC Metre Backstroke**

8th Abbey Hemi

**Boys 9-10 25 SC Metre Backstroke**

6th Reid Calder-Smith

7th Jayden Shaw

**Girls 5-8 25 SC Metre Breaststroke**

1st Willa MacPherson-Martin

**Boys 9-10 25 SC Metre Breaststroke**

3rd Harrison McIntosh

**Girls 5-8 25 SC Metre Butterfly**

1st Willa MacPherson-Martin

**Girls 5-8 25 SC Metre Freestyle**

1st Willa MacPherson-Martin

**Girls 9-10 25 SC Metre Freestyle**

7th Abbey Hemi

**Boys 9-10 25 SC Metre Freestyle**

5th Harrison McIntosh

5th Jayden Shaw

8th Reid Calder-Smith

**Mixed 100 SC Metre Medley Relay**

2nd Jayden Shaw, Harrison McIntosh, Teffi Reardon, Abbey Hemi

3rd Willa MacPherson-Martin, Amelia Melfan, Reid Calder-Smith, Holly Hunter

**Mixed 100 SC Metre Freestyle Relay**

3rd Jayden Shaw, Harrison McIntosh, Teffi Reardon, Abbey Hemi

4th Willa MacPherson-Martin, Amelia Melfan, Reid Calder-Smith, Holly Hunter



**TE ANAU SCHOOL - WE ARE HIRING!**

Te Anau School - Teacher Aide  
15 hours per week  
(Fixed Term, Term Time Only until the end of 2025)

We are looking for a Teacher Aide to commence duties May 12 (or earlier). The successful candidate will be working with individuals with health needs and small groups of children to support everyday school learning. The successful applicant must have strong empathy with children, have a sense of humour and be flexible.

If you wish to apply, please send a cover letter with why you think you would be a good candidate along with your CV. Please include two referees.

Please note, all candidates will be required to complete a police vetting process.

Applications close on 28 April at 3pm.  
If you have any questions, please contact Mark Hunter, mhunter@teanau.school.nz

**Sausages Tomorrow!!!** Don't forget to send \$2 along with your child tomorrow to order a sausage!

**Year 6 Camp Fundraisers**

Each year our Year 6 tamariki travel to Dunedin for one week to experience city life. This costs approximately \$300.00 per child to attend.

To help finance this we fundraise throughout the year. This includes our weekly Friday sausages and the Polar Plunge.

***From Term 2, our sausages will increase in price to \$3.00 per sausage***

We thank you in advance for helping us contribute to this camp.

**Poppet Clothing Today**

will be at school on Thursday  
10 April from 1.00pm to 3.15pm  
for all your school uniform needs.

Mobile Eftpos will be available.

## School Policies and Procedures

Our policies and procedures can be viewed at any time through our school website at [www.teanau.school.nz](http://www.teanau.school.nz). Click on 'Policies and Procedures' and enter the following username and password. Username: teanau Password: climbing

This term we are reviewing:

- **Health, Safety, and Welfare Policy**
- **Safety Management System**
- **Risk Management**
- **Healthcare**

Click on **Current Review** to view and give feedback.

*Please take a look at the lost property tomorrow. There are 2 large black bags of unnamed/can't read uniform fleeces from this term only. All lost property items will be donated.*



## School Term Calendar 2025

You can also access our school calendar through the website [www.teanau.school.nz](http://www.teanau.school.nz)<sup>1</sup>

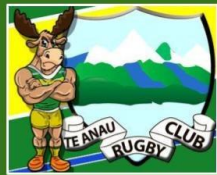
Click on 'Our School' on the taskbar, then click on 'Calendar'

- **10 April - Room 4 Eel Trip**
- **10 April - Poppet Clothing Visit - 1.00pm - 3.15pm**
- **10 April - Transition to School Afternoon 3.15pm**
- **11 April - Special Assembly to Farewell Mr Excell - 9.30am Event Centre**

---

<sup>1</sup><https://www.teanau.school.nz/>

- **11 April - Last day of Term 1**
- **28 April - Term 2 Starts**
- **28 April - Special Assembly to Welcome New Principal, Fallon Graham - 9.30am Event Centre**
- **29 April - Year 4 Te Koawa Trip**
- **29 April - Year 5 Colac Bay Marae Trip**
- **30 April - Postponement Day for Year 4 Te Koawa Trip**
- **14 May - Board Meeting 7pm**
- **16 May - Basin Cross Country**
- **19 May - NZ Playhouse**
- **2 June - King's Birthday - School Closed**
- **3 June - Teacher Only Day - School Closed**
- **13 June - Southland Cross Country**
- **20 June - Matariki - School Closed**
- **27 June - Last Day of Term 2**
- **14 July - First Day of Term 3**
- **15 Sep - Mobile Dental Unit approximate arrival date**
- **27 October - Labour Day - School Closed**
- **24-28 Nov - Year 6 Camp Week**
- **1-2 Dec - Year 5 Deep Cove Trip**
- **16 Dec - Last Day of School and Year 6 Graduation**



## Te Anau Rugby Club Junior Club 2025

### Primary School Grades (Boys and Girls):

Year 0 - 2 Rippa  
Year 3&4 Tackle  
Year 5&6 Tackle  
Year 7&8 Tackle

Season Starts Term 2 - Sat 10th May

#### How to register:

- Parent to download Rugby Xplorer App.
- Create profile
- Click "more"
- Click "register"
- Click "play rugby"
- Add children



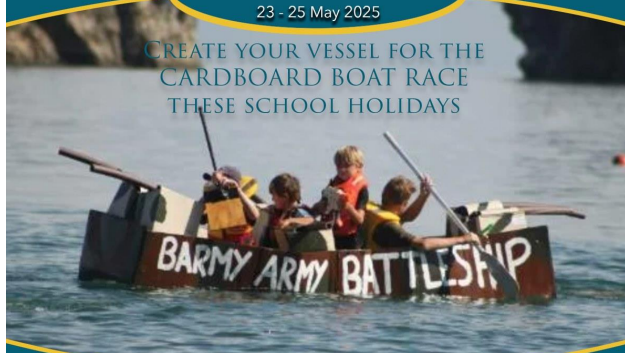
SCAN ME!

Enquiries: Mark Hunter 0226115459 - Junior Coordinator  
Registrations Close 17th April

# FIORDLAND Classic Boat FESTIVAL

23 - 25 May 2025

CREATE YOUR VESSEL FOR THE  
CARDBOARD BOAT RACE  
THESE SCHOOL HOLIDAYS



## RACE IN THE CARDBOARD BOAT RACE

Saturday 24 May 2025 - 9am briefing 10 am racing

For more information email [info@fiordlandhistoriccruises.co.nz](mailto:info@fiordlandhistoriccruises.co.nz)  
<https://www.facebook.com/fiordlandclassicboatfestival>  
<https://www.fiordlandhistoriccruises.co.nz/events>

# Fiordland

Classic Boat Festival

## CARDBOARD BOAT RACE



### Categories:

- \* **Junior - Under 16 years** (Including those who build the vessel)
- \* **School**
- \* **Workplace**
- \* **Team**

### Prizes:

- \* **Judges Choice**
- \* **Most Spectacular**
- \* **Boat that will most likely leave you stranded**
- \* **1st - 2nd - 3rd** (Awarded to overall placings & Junior Category)

### Materials

- The entire hull, superstructure and seating of all boats must be made entirely of only cardboard
- PVA Glue permitted - No Tape
- No pre-treated, waxed, or reinforced cardboard
- No wood, plastic, fibreglass, or Styrofoam
- No caulking compounds or two-part adhesives
- No wrapping in plastic or fibreglass
- Biodegradable materials only Nothing is to be left in the Lake water
- We recommend all boats are painted

### Safety

- All competitors must wear a personal flotation device (PFD)
- Boats must be free of sharp edges or anything that could cause injuries
- Boats must be designed so crew members can exit easily if the boat sinks
- Propulsion
  - Boats must be propelled by muscle power from within the boat
  - No prone, surfboard, or swimming positions are allowed

### Other rules

- Boats must be built before the race
- Boats must be completely enclosed or permit the crew to remain fully on top of the vessel
- Boats must not have permanently enclosed passenger areas above the occupants' shoulders

**Oars from paddle boards & Kayaks may be used**  
**Team member size Min 2 Max 6**

When: 24 May 2025

Where: Marakura Yacht Club

Time: Registration 9am

Racing 10am

Other: All PFD's will be checked for safety during registration between 9 & 10 am prior to race start.



# INTERESTED IN SWIMMING!

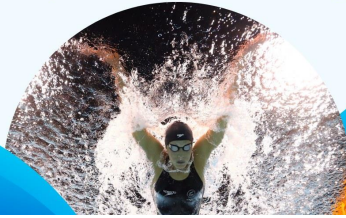


Did you know that Swim Club is not just for those who want to race? The majority of our clubs are run one night a week and are for learn to swim to beginner level racing

- |                   |          |
|-------------------|----------|
| Bluff             | Murihiku |
| Central Southland | Orca     |
| Collegiate        | Riverton |
| Fiordland         | Waiau    |
| Hokonui Aquatics  | Waverley |
| Johnston Waters   |          |

## Want to know more?

Contact Swimming Southland Development Officer  
Katrina Garrett  
[development@swimsouthland.org.nz](mailto:development@swimsouthland.org.nz)





## SCHOOL HOLIDAY FUTSAL CLINIC

MON 14<sup>TH</sup> APRIL

Contact info:  
[leighsouthlandfootball.org.nz](http://leighsouthlandfootball.org.nz)

BOYS 13-17 - 9AM TO 10AM | GIRLS 13-17 - 10:30AM TO 11:30AM - \$25PP

YMCA INVERCARGILL - 77 TAY STREET, INVERCARGILL 9810

SCAN THE QR CODE TO REGISTER TODAY!





# SCHOOL HOLIDAY CLINIC



x



Wednesday 16<sup>th</sup> April  
9:00am - 12:00pm  
Winton Football Club  
Moore's Reserve  
Price Road, Winton

JUNIOR GIRLS WANTED!  
LOOKING TO TRY A NEW SPORT?  
COME OUT AND MAKE SOME NEW  
FRIENDS AND LEARN SOME  
AWESOME SKILLS!



Scan the QR code  
to register today

## Junior Girls and Boys

Under 7 to 12 - 9:00am - 10:30am  
Under 13 to 17 - 10:30am - 12:00pm

## SOUTHLAND FOOTBALL SCHOOL HOLIDAY FUTSAL CLINIC UNDER 9 TO 14 GIRLS

ILT STADIUM:  
SURREY PARK ROAD, GLENGARRY,  
INVERCARGILL

12:30PM - 3PM  
MONDAY 14<sup>TH</sup> APRIL

SCAN IN THE QR CODE  
TO REGISTER - \$20pp



Please contact Leigh on 021 507 077 for further information



## SOUTHLAND FOOTBALL SOUTHLAND FOOTBALL HOLIDAY CAMP

- ILT Football Turf, Invercargill
- Tuesday 15th of April
- \$25 per player
- Great way to start the season
- Work with academy coaches
- High performance environment

Scan QR  
code to  
register!



Juniors (8-12 year olds): 9am-12am | Youth (13-17 year olds): 1pm-4pm  
Enquiries to Leigh | [leigh@southlandfootball.org.nz](mailto:leigh@southlandfootball.org.nz) | 021 507 077